

713.1



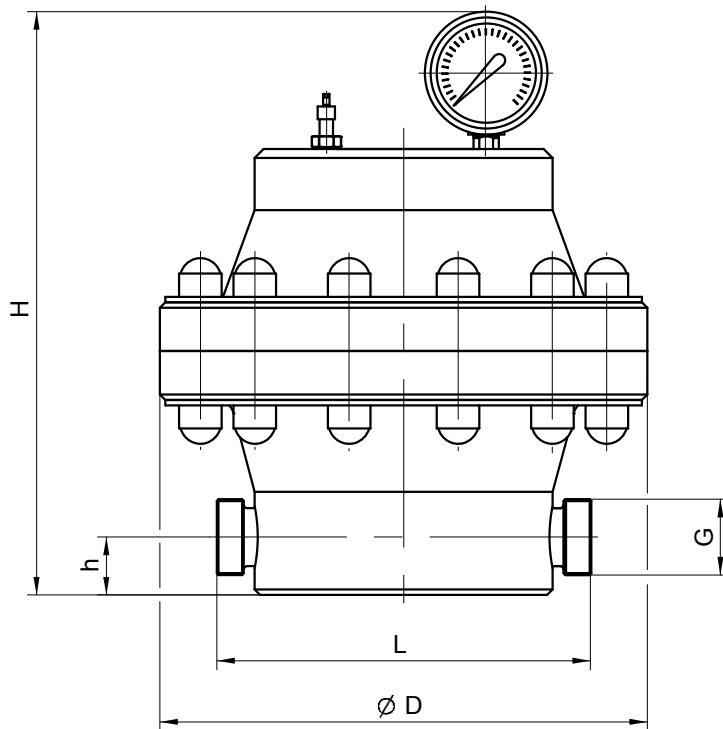
713.1 in survey

- Easy to operate
- Low maintenance
- Long service life
- Easy to install
- Design acc. to 97/23/EG
- High-quality materials

Technical data

Type	Nominal width DN	Max. admissible operating pressure		Content	
		bar	psi	Litres	Gallons
713.1	20	10	145	3	0,79

Dimensional drawing



Dimensional chart

Indications in mm / inch

Type	G	D		L			h		H1		H2		Weight (kg)				
		mm	in	PVC-U	PP	PVDF	mm	in	mm	in	mm	in	PP	PVC-U/ PVDF			
713.1	G1 1/4	270	10,63	207	8,15	215	8,46	215	8,46	32	1,26	271	10,67	360	14,17	6,5	9

■ Indication of weight for basic design acc. to order information

Order information

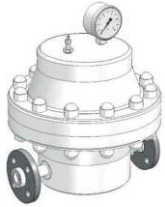


Diaphragm-pulsation damper



Basic design:

- Filling valve, diaphragm made of EPDM or FPM, Connection seals o-ring EPDM or FPM
- Manometer glycerine damped, d 63, 0-16 bar, housing, 1.4301, measuring system copper-alloy based,
- PVDF-design: upper part (not medium-contacting) made of PVC-U
- Connections: external thread

Type	Thread connection	Material					
		PVC-U/EPDM	PVC-U/FPM	PP/EPDM	PP/FPM	PVDF/EPDM	PVDF/FPM
		Price (EUR)	Article-No	Article-No.			Article-No
713.1	G 1 1/4	30071038	30071039	30071040	30071041	30071060	30071061

Options/Accessories		713.1	
Loose flange at plastic fittings 	Design: Connection incl. connection o-ring Connecting dimension acc. to DIN 2501		
	PVC-design: loose flange made of PVC-U	DN 20	
	PP- / PVDF-design: loose flange made of PP with steel reinforcement	DN 20	
Filling pump FLP 2 	for filling device, max. 7 bar (101 psi), with manometer, 2 m (6,5 ft) hose, coupling piece for air hose	90009396	
Console 		PP	90010913
	for wall mounting made of:	1.4301	90010914
		painting steel	90010915